

# Leakage test of ABS modules

The IMAK leakage test system inspects the tightness of the housing of electromechanical modules (test pieces), e.g. ABS control units.

First the test piece is fixed and contacted in the leakage test machine. Then the test piece is stressed by vacuum pressure. During a specified time interval the developing of vacuum values is monitored. The developing of vacuum values indicates the tightness of the test piece.

The standard leakage test system of IMAK is equipped with two test rigs. They ensure short cycle time.

The leakage test system provides two alternative types of assembly. Either a band-conveyor provides an automatic assembly of the test pieces or the test pieces are placed manually into the two test rigs.

In case of automatic assembly the test pieces are ionized before being tested to prevent the test objects from damage.

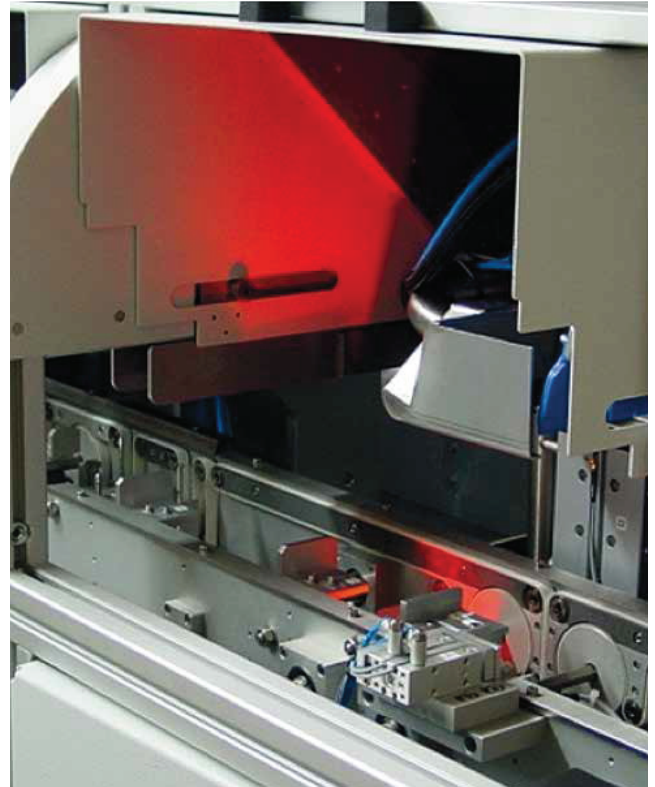
Different barcode scanner, proximity switches and pneumatically driven stopper, provide an optimal transport of the test pieces.

## Product characteristics

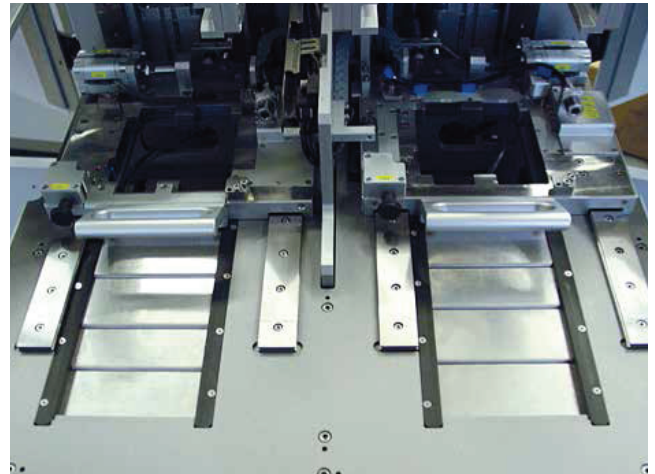
- Modular constructed, customizable
- Alternative handling manually or automatically
- Electrical discharge via ionizer
- Multiple use via exchangeable test adapter
- Contactless control of the test objects via proximity switches
- Control via S7 interface
- ESD conformity

## Advantages

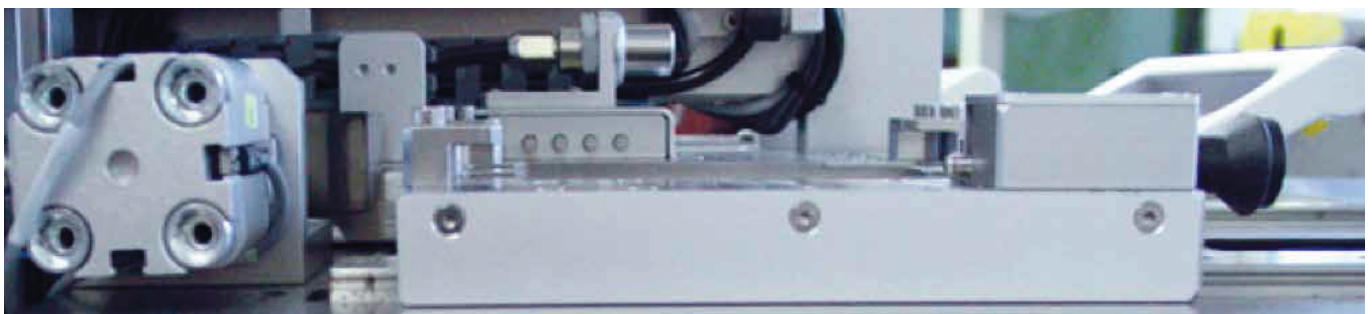
- Two test rigs increase the number of cycle
- Flexible construction
- Automatic ionization



Leakage test machine inline



Leakage test machine offline (two test rigs)



Leakage test machine offline (sideview)